

Rotary Cam Switches



Enclosed Switches with insulated enclosure 68 × 68 × 53 mm

Enclosed Switches with insulated enclosure 68 × 68 × 53 mm

- 20 A
- 1 up to 4 contacts
- IP65
- Insulated polycarbonate enclosure



- Control Switch
- ON-OFF Switch
- Multi-step Switch
- Instrument Switch
- Changeover Switch
- Motor Switch

Setup of order code number: Type - Switching programme - Mounting form

Ordering example:

1 pole Multi-step Switch without OFF, 20 A, N-handle silver/black →

Type	Switching programme	Mtg. form
M220	61049	107M1
Order code no.	M220-61049-107M1	

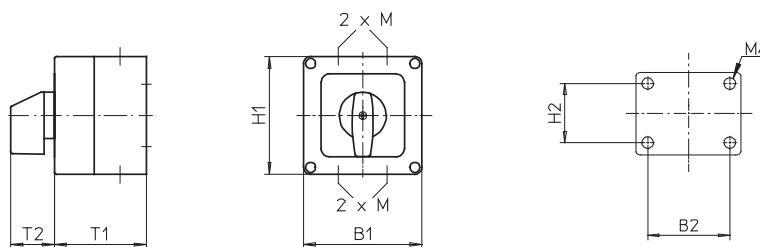
Type	Rated data (IEC 60947)			Terminal accessibility
	Operational current I_e AC-21A (A)	Operational power (at 380–440 V)		
		AC-23A (kW)	AC-3A (kW)	
M220	20	7.5	5.5	Terminals accessible laterally

Switching programme	Stages	Contacts	Description
61191	1	1	ON-OFF Switch 90°, 1 pole
61192	1	2	ON-OFF Switch 90°, 2 pole
61199	2	3	ON-OFF Switch 90°, 3 pole
61194	2	4	ON-OFF Switch 90°, 4 pole, 1 pole early make/late break
61001	1	1	ON-OFF Switch 60°, 1 pole
61002	1	2	ON-OFF Switch 60°, 2 pole
61003	2	3	ON-OFF Switch 60°, 3 pole
61025	1	2	Changeover Switch with centre OFF 60°, 1 pole
61026	2	4	Changeover Switch with centre OFF 60°, 2 pole
61037	1	2	Changeover Switch without OFF 60°, 1 pole
61049	2	3	Multi-step Switch without OFF, 3 steps, 1 pole
61050	2	4	Multi-step Switch without OFF, 4 steps, 1 pole
61210	2	4	Motor Reversing Switch, 2 pole

Switching diagrams and further switching programmes from page 56.

Mounting form	Operator
107M1	M-handle silver/black

Dimensions in mm:



Type	H1	B1	T1	T2	2 × M	H2	B2
M220	68	68	53	25	16	36	50

Rotary Cam Switches

Enclosed Switches with insulated enclosure 68 × 68 × 53 mm

Enclosed Switches with insulated enclosure 68 × 68 × 53 mm

- 20 A
- 1 up to 4 contacts
- IP65
- Insulated polycarbonate enclosure



- Main/Emergency-Off Switch
- Main Switch

Setup of order code number: Type - Switching programme - Mounting form Ordering example: 2 pole Main/Emergency-Off Switch 90°, 20 A, padlock device with M-handle yellow/red →	Type	Switching programme	Mtg. form
	M220	61192	117M4
	Order code no. M220-61192-117M4		

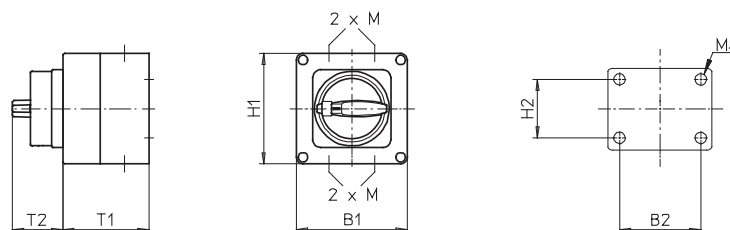
Type	Rated data (IEC 60947)			Terminal accessibility
	Operational current I _e AC-21A (A)	Operational power (at 380–440 V) AC-23A (kW) AC-3A (kW)		
M220	20	7.5	5.5	Terminals accessible laterally

Switching programme	Stages	Contacts	Description
61191	1	1	ON-OFF Switch 90°, 1 pole
61192	1	2	ON-OFF Switch 90°, 2 pole
61199	2	3	ON-OFF Switch 90°, 3 pole
61194	2	4	ON-OFF Switch 90°, 4 pole, 1 pole early make/late break

Switching diagrams and further switching programmes from page 56.

Mounting form	Operator	Main/Emergency-Off Switch	Mounting form	Operator	Main Switch
117M4		padlock device with M-handle yellow/red	117M1		padlock device with M-handle black

Dimensions in mm:



Type	H1	B1	T1	T2	2 × M	H2	B2
M220	68	68	53	31	16	36	50

Rotary Cam Switches



Enclosed Switches with insulated enclosure 100 × 80 × 65 mm

Enclosed Switches with insulated enclosure 100 × 80 × 65 mm

- 20 A
- 1 up to max. 4 contacts
- IP66
- Insulated polycarbonate enclosure



- Control Switch
- ON-OFF Switch
- Multi-step Switch
- Instrument Switch
- Changeover Switch
- Motor Switch

Setup of order code number: Type - Switching programme - Mounting form Ordering example: 2 pole Changeover Switch without OFF 60°, 20 A, M-handle silver/black →	Type	Switching programme	Mtg. form
	M220	61038	076M1
	Order code no. M220-61038-076M1		

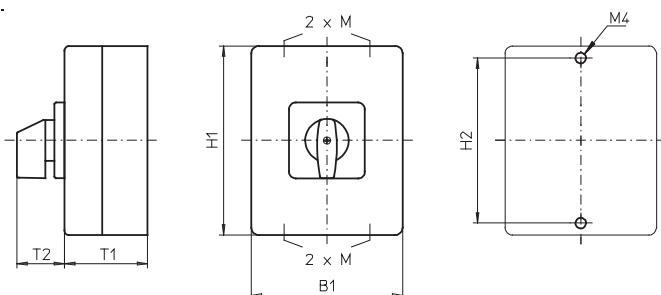
Type	Contacts	Rated data (IEC 60947)			Terminal accessibility
		Operational current I _o AC-21A (A)	Operational power (at 380–440 V) AC-23A (kW) AC-3A (kW)		
P220	1 to 2	20	7.5	5.5	Terminals accessible from mounting direction
M220	1 to 4	20	7.5	5.5	Terminals accessible laterally

Switching programme	Stages	Contacts	Description
61191 for type P220	1	1	ON-OFF Switch 90°, 1 pole
61192 for type P220	1	2	ON-OFF Switch 90°, 2 pole
61001 for type P220	1	1	ON-OFF Switch 60°, 1 pole
61002 for type P220	1	2	ON-OFF Switch 60°, 2 pole
61025 for type P220	1	2	Changeover Switch with centre OFF 60°, 1 pole
61037 for type P220	1	2	Changeover Switch without OFF 60°, 1 pole
61003 for type M220	2	3	ON-OFF Switch 60°, 3 pole
61026 for type M220	2	4	Changeover Switch with centre OFF 60°, 2 pole
61038 for type M220	2	4	Changeover Switch without OFF 60°, 2 pole
61049 for type M220	2	3	Multi-step Switch without OFF, 3 steps, 1 pole
61050 for type M220	2	4	Multi-step Switch without OFF, 4 steps, 1 pole
61210 for type M220	2	4	Motor Reversing Switch, 2 pole

Switching diagrams and further switching programmes from page 56.

Mounting form	Operator
076M1	M-handle silver/black

Dimensions in mm:



Type	H1	B1	T1	T2	2 × M	H2
P220	100	80	65	32	20	90
M220	100	80	65	32	20	90

Rotary Cam Switches

Enclosed Switches with insulated enclosure 100 × 80 × 65 mm

Enclosed Switches with insulated enclosure 100 × 80 × 65 mm

- 20 A
- 1 up to max. 4 contacts
- IP66
- Insulated polycarbonate enclosure



- Control Switch
- ON-OFF Switch
- Multi-step Switch
- Instrument Switch
- Changeover Switch
- Motor Switch

Setup of order code number: Type - Switching programme - Mounting form Ordering example: 2 pole Changeover Switch 90°, 20 A, padlockable with V-handle silver/black →	Type	Switching programme	Mtg. form
	M220	61152	076V1
	Order code no. M220-61152-076V1		

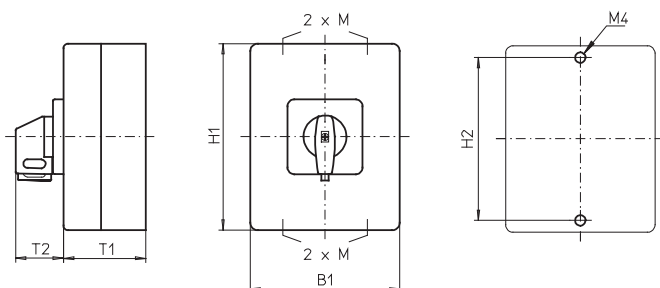
Type	Contacts	Rated data (IEC 60947)			Terminal accessibility
		Operational current I _e AC-21A (A)	Operational power (at 380–440 V)		
			AC-23A (kW)	AC-3A (kW)	
P220	1 to 2	20	7.5	5.5	Terminals accessible from mounting direction
M220	1 to 4	20	7.5	5.5	Terminals accessible laterally

Switching programme	Stages	Contacts	Description
61001 for type P220	1	1	ON-OFF Switch 60°, 1 pole
61002 for type P220	1	2	ON-OFF Switch 60°, 2 pole
61025 for type P220	1	2	Changeover Switch with centre OFF 60°, 1 pole
61151 for type P220	1	2	Changeover Switch with centre OFF 90°, 1 pole
61003 for type M220	2	3	ON-OFF Switch 60°, 3 pole
61026 for type M220	2	4	Changeover Switch with centre OFF 60°, 2 pole
61151 for type M220	1	2	Changeover Switch with centre OFF 90°, 1 pole
61152 for type M220	2	4	Changeover Switch with centre OFF 90°, 2 pole
61210 for type M220	2	4	Motor Reversing Switch, 2 pole

Switching diagrams and further switching programmes from page 56.

Mounting form	Operator	Padlockable options
076V1	padlockable with V-handle silver/black	padlockable 12h
078V1	padlockable with V-handle silver/black	3 positions padlockable (9h/12h/03h) (only for Changeover Switches with 90° switching angle)

Dimensions in mm:



Type	H1	B1	T1	T2	2 × M	H2
P220	100	80	65	32	20	90
M220	100	80	65	32	20	90

Rotary Cam Switches



Enclosed Switches with insulated enclosure 100 × 80 × 65 mm

Enclosed Switches with insulated enclosure 100 × 80 × 65 mm

- 20 A
- 1 up to max. 4 contacts
- IP66
- Insulated polycarbonate enclosure



- Main/Emergency-Off Switch
- Main Switch

Setup of order code number: Type - Switching programme - Mounting form Ordering example: 2 pole Main Switch 90°, 20 A, padlock device with N-handle yellow/red →	Type	Switching programme	Mtg. form
	P220	61192	077N4
	Order code no. P220-61192-077N4		

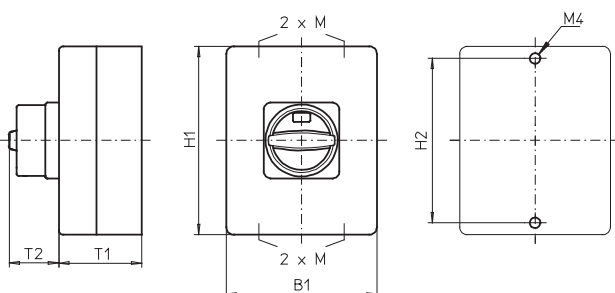
Type	Contacts	Rated data (IEC 60947)			Terminal accessibility
		Operational current I _e AC-21A (A)	Operational power (at 380–440 V)		
			AC-23A (kW)	AC-3A (kW)	
P220	1 to 2	20	7.5	5.5	Terminals accessible from mounting direction
M220	1 to 4	20	7.5	5.5	Terminals accessible laterally

Switching programme	Stages	Contacts	Description
61191 for type P220	1	1	ON-OFF Switch 90°, 1 pole
61192 for type P220	1	2	ON-OFF Switch 90°, 2 pole
61191 for type M220	1	1	ON-OFF Switch 90°, 1 pole
61192 for type M220	1	2	ON-OFF Switch 90°, 2 pole
61199 for type M220	2	3	ON-OFF Switch 90°, 3 pole
61194 for type M220	2	4	ON-OFF Switch 90°, 4 pole, 1 pole early make/late break

Switching diagrams and further switching programmes from page 56.

Mounting form	Operator	Main/Emergency-Off Switch	Mounting form	Operator	Main Switch
077N4		padlock device with N-handle yellow/red	077N1		padlock device with N-handle black
077M4		padlock device with M-handle yellow/red	077M1		padlock device with M-handle black
077V4		padlockable with V-handle yellow/red	077V1		padlockable with V-handle silver/black

Dimensions in mm:



Mounting form	H1	B1	T1	T2	2 × M	H2
077N4/077N1	100	80	65	33	20	90
077M4/077M1	100	80	65	38	20	90
077V4/077V1	100	80	65	32	20	90

Rotary Cam Switches

Enclosed Switches with insulated enclosure 100 × 80 × 85 mm

Enclosed Switches with insulated enclosure 100 × 80 × 85 mm

- 20 A
- 3 up to max. 8 contacts
- IP66
- Insulated polycarbonate enclosure



- Control Switch
- ON-OFF Switch
- Multi-step Switch
- Instrument Switch
- Changeover Switch
- Motor Switch

Setup of order code number: Type - Switching programme - Mounting form Ordering example: 4 pole Changeover Switch without OFF 60°, 20 A, M-handle silver/black →	Type	Switching programme	Mtg. form
	M220	61040	176M1
	Order code no. M220-61040-176M1		

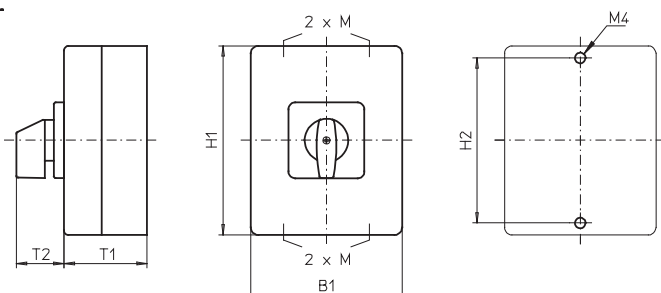
Type	Contacts	Rated data (IEC 60947)			Terminal accessibility
		Operational current I _e AC-21A (A)	Operational power (at 380–440 V)		
			AC-23A (kW)	AC-3A (kW)	
P220	3 to 6	20	7.5	5.5	Terminals accessible from mounting direction
M220	5 to 8	20	7.5	5.5	Terminals accessible laterally

Switching programme	Stages	Contacts	Description
61199 for type P220	2	3	ON-OFF Switch 90°, 3 pole
61194 for type P220	2	4	ON-OFF Switch 90°, 4 pole, 1 pole early make/late break
61026 for type P220	2	4	Changeover Switch with centre OFF 60°, 2 pole
61038 for type P220	2	4	Changeover Switch without OFF 60°, 2 pole
61049 for type P220	2	3	Multi-step Switch without OFF, 3 steps, 1 pole
61211 for type P220	3	5	Motor Reversing Switch, 3 pole
61906 for type M220	3	6	ON-OFF Switch 90°, 6 pole
61919 for type M220	4	8	ON-OFF Switch 90°, 8 pole, 2 pole early make/late break
61028 for type M220	4	8	Changeover Switch with centre OFF 60°, 4 pole
61039 for type M220	3	6	Changeover Switch without OFF 60°, 3 pole
61040 for type M220	4	8	Changeover Switch without OFF 60°, 4 pole
61211 for type M220	3	5	Motor Reversing Switch, 3 pole

Switching diagrams and further switching programmes from page 56.

Mounting form	Operator
176M1	M-handle silver/black

Dimensions in mm:



Type	H1	B1	T1	T2	2 × M	H2
P220	100	80	85	32	20	90
M220	100	80	85	32	20	90

Rotary Cam Switches



Enclosed Switches with insulated enclosure 100 × 80 × 85 mm

Enclosed Switches with insulated enclosure 100 × 80 × 85 mm

- 20 A
- 3 up to max. 8 contacts
- IP66
- Insulated polycarbonate enclosure



- Control Switch
- ON-OFF Switch
- Multi-step Switch
- Instrument Switch
- Changeover Switch
- Motor Switch

Setup of order code number: Type - Switching programme - Mounting form

Ordering example:

2 pole Changeover Switch 90°, 20 A, padlockable with V-handle silver/black →

Type	Switching programme	Mtg. form
P220	61152	178V1
Order code no.		P220-61152-178V1

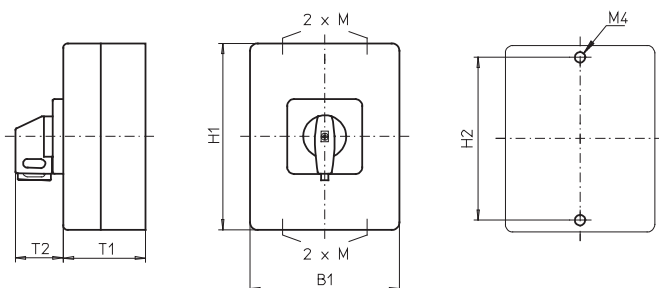
Type	Contacts	Rated data (IEC 60947)			Terminal accessibility
		Operational current I _o AC-21A (A)	Operational power (at 380–440 V) AC-23A (kW) AC-3A (kW)		
P220	1 to 2	20	7.5	5.5	Terminals accessible from mounting direction
M220	1 to 4	20	7.5	5.5	Terminals accessible laterally

Switching programme	Stages	Contacts	Description
61003 for type P220	2	3	ON-OFF Switch 60°, 3 pole
61027 for type P220	3	6	Changeover Switch with centre OFF 60°, 3 pole
61152 for type P220	2	4	Changeover Switch with centre OFF 90°, 2 pole
61153 for type P220	3	6	Changeover Switch with centre OFF 90°, 3 pole
61211 for type P220	3	5	Motor Reversing Switch, 3 pole
61027 for type M220	3	6	Changeover Switch with centre OFF 60°, 3 pole
61028 for type M220	4	8	Changeover Switch with centre OFF 60°, 4 pole
61153 for type M220	3	6	Changeover Switch with centre OFF 90°, 3 pole
61211 for type M220	3	5	Motor Reversing Switch, 3 pole

Switching diagrams and further switching programmes from page 56.

Mounting form	Operator	Padlockable options
176V1	padlockable with V-handle silver/black	padlockable 12h
178V1	padlockable with V-handle silver/black	3 positions padlockable (9h/12h/03h) (only for Changeover Switches with 90° switching angle)

Dimensions in mm:



Type	H1	B1	T1	T2	2 × M	H2
P220	100	80	85	32	20	90
M220	100	80	85	32	20	90

Rotary Cam Switches

Enclosed Switches with insulated enclosure 100 × 80 × 85 mm

Enclosed Switches with insulated enclosure 100 × 80 × 85 mm

- key operated
- 20 A ■ 1 up to 6 contacts
- IP40
- Insulated polycarbonate enclosure



- Control Switch
- ON-OFF Switch
- Multi-step Switch
- Instrument Switch
- Changeover Switch
- Motor Switch

Setup of order code number: Type - Switching programme - Mounting form Ordering example: 3 pole Changeover Switch with centre OFF 60°, 20 A, key operated, key removable at 12h →	Type	Switching programme	Mtg. form
	M220	61027	E001B
	Order code no. M220-61027CE001B		

Type	Rated data (IEC 60947)			Terminal accessibility
	Operational current I _e AC-21A (A)	Operational power (at 380–440 V) AC-23A (kW) AC-3A (kW)		
M220	20	7.5	5.5	Terminals accessible laterally

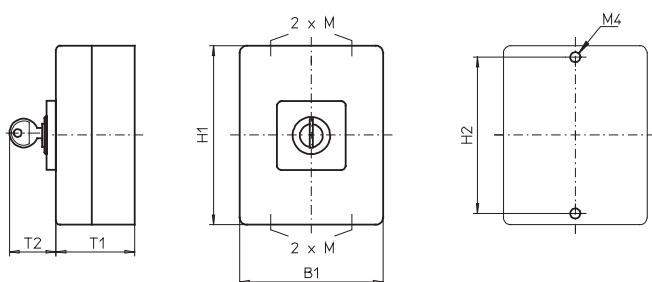
Switching programme	Stages	Contacts	Description
61191	1	1	ON-OFF Switch 90°, 1 pole
61192	1	2	ON-OFF Switch 90°, 2 pole
61001	1	1	ON-OFF Switch 60°, 1 pole
61002	1	2	ON-OFF Switch 60°, 2 pole
61025	1	2	Changeover Switch with centre OFF 60°, 1 pole
61026	2	4	Changeover Switch with centre OFF 60°, 2 pole
61027	3	6	Changeover Switch with centre OFF 60°, 3 pole
61037	1	2	Changeover Switch without OFF 60°, 1 pole
61038	2	4	Changeover Switch without OFF 60°, 2 pole
61049	2	3	Multi-step Switch without OFF, 3 steps, 1 pole
61050	2	4	Multi-step Switch without OFF, 4 steps, 1 pole
61211	3	5	Motor Reversing Switch, 3 pole

Switching diagrams and further switching programmes from page 56.

Mounting form	Operator
E001. *	Key operated, silver/metal key Ronis cylinder lock C001, 2 keys (other lock types on request)

* The dot in the order code number must be replaced by the classification letter which identifies the key removable positions, see page 85.

Dimensions in mm:



Type	H1	B1	T1	T2	2 × M	H2
M220	100	80	85	33	20	90

Rotary Cam Switches

Enclosed Switches with insulated enclosure 100 × 80 × 85 mm

Enclosed Switches with insulated enclosure 100 × 80 × 85 mm

- 20 A
- 3 up to max. 8 contacts
- IP66
- Insulated polycarbonate enclosure



- Main/Emergency-Off Switch
- Main Switch

Setup of order code number: Type - Switching programme - Mounting form Ordering example: 6 pole ON-OFF Switch 90°, 20 A, padlock device with N-handle yellow/red →	Type	Switching programme	Mtg. form
	M220	61906	177N4
	Order code no.	M220-61906-177N4	

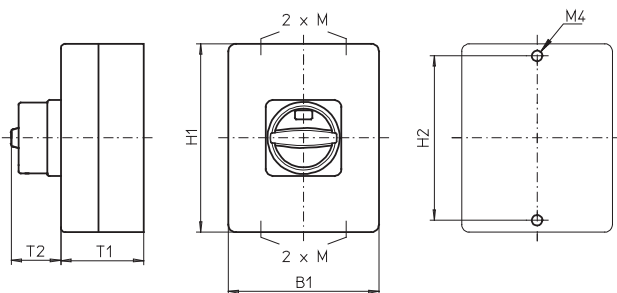
Type	Contacts	Rated data (IEC 60947)			Terminal accessibility
		Operational current I _e AC-21A (A)	Operational power (at 380–440 V)		
			AC-23A (kW)	AC-3A (kW)	
P220	3 to 6	20	7.5	5.5	Terminals accessible from mounting direction
M220	5 to 8	20	7.5	5.5	Terminals accessible laterally

Switching programme	Stages	Contacts	Description
61199 for type P220	2	3	ON-OFF Switch 90°, 3 pole
61194 for type P220	2	4	ON-OFF Switch 90°, 4 pole, 1 pole early make/late break
61906 for type P220	3	6	ON-OFF Switch 90°, 6 pole
61906 for type M220	3	6	ON-OFF Switch 90°, 6 pole
61919 for type M220	4	8	ON-OFF Switch 90°, 8 pole, 2 pole early make/late break

Switching diagrams and further switching programmes from page 56.

Mounting form	Operator	Main/Emergency-Off Switch	Mounting form	Operator	Main Switch
177N4		padlock device with N-handle yellow/red	177N1		padlock device with N-handle black
177M4		padlock device with M-handle yellow/red	177M1		padlock device with M-handle black
177V4		padlockable with V-handle yellow/red	177V1		padlockable with V-handle silver/black

Dimensions in mm:



Mounting form	H1	B1	T1	T2	2 × M	H2
177N4/177N1	100	80	85	33	20	90
177M4/177M1	100	80	85	38	20	90
177V4/177V1	100	80	85	32	20	90

Rotary Cam Switches

Enclosed Switches with insulated enclosure 125 × 100 × 133 mm

Enclosed Switches with insulated enclosure 125 × 100 × 133 mm

- without cover interlock
- 20 A / 25 A / 32 A ■ 1 up to max. 16 contacts
- IP66
- Insulated polycarbonate enclosure



- Control Switch
- ON-OFF Switch
- Multi-step Switch
- Instrument Switch
- Changeover Switch
- Motor Switch

Setup of order code number: Type - Switching programme - Mounting form Ordering example: Reversing Star-Delta Switch, 25 A, M-handle silver/black →	Type	Switching programme	Mtg. form
	M225	61203	276M1
	Order code no. M225-61203-276M1		

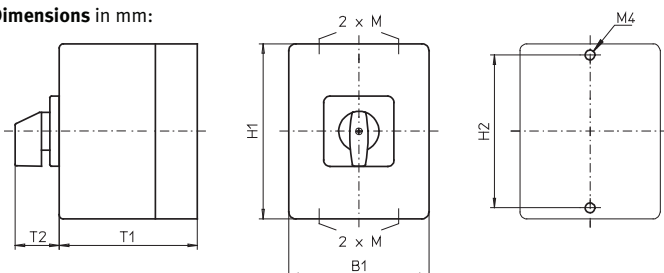
Type	Contacts	Rated data (IEC 60947)			Degree of Protection Terminals	Terminal accessibility
		Operational current I _e AC-21A (A)	Operational power (at 380–440 V)			
			AC-23A (kW)	AC-3A (kW)		
P220	1 to 12	20	7.5	5.5	IP66	Terminals accessible from mounting direction
P225	1 to 10	25	11	7.5	IP66	
M220	1 to 16	20	7.5	5.5	IP66	Terminals accessible laterally
M225	1 to 12	25	11	7.5	IP66	
T225	1 to 10	32	15	11	IP66	Terminals accessible laterally

Switching programme	Stages	Contacts	Description
61906 for types P220/P225	3	6	ON-OFF Switch 90°, 6 pole
61905 for types P220/P225	3	5	ON-OFF Switch 90°, 5 pole, 3 pole early make/late break
61029 for types P220/P225	5	10	Changeover Switch with centre OFF 60°, 5 pole
61089 for types P220/P225	5	9	Multi-step Switch without OFF, 3 steps, 3 pole
61211 for types P220/P225	3	5	Motor Reversing Switch, 3 pole
61203 for types P220/P225	5	10	Reversing Star-Delta Switch
61906 for types M220/M225/T225	3	6	ON-OFF Switch 90°, 6 pole
61919 for types M220/M225/T225	4	8	ON-OFF Switch 90°, 8 pole, 2 pole early make/late break
61030 for types M220/M225	6	12	Changeover Switch with centre OFF 60°, 6 pole
61041 for types M220/M225/T225	5	10	Changeover Switch without OFF 60°, 5 pole
61040 for types M220/M225/T225	4	8	Changeover Switch without OFF 60°, 4 pole
61211 for types M220/M225/T225	3	5	Motor Reversing Switch, 3 pole
61203 for types M220/M225/T225	5	10	Reversing Star-Delta Switch

Switching diagrams and further switching programmes from page 56.

Mounting form	Operator
276M1	M-handle silver/black

Dimensions in mm:



Type	H1	B1	T1	T2	2 × M	H2
P220	125	100	133	32	20/25	115
P225	125	100	133	32	20/25	115
M220	125	100	133	32	20/25	115
M225	125	100	133	32	20/25	115
T225	125	100	133	32	20/25	115

Rotary Cam Switches



Enclosed Switches with insulated enclosure 125 × 100 × 133 mm

Enclosed Switches with insulated enclosure 125 × 100 × 133 mm

- without cover interlock
- 20 A / 25 A / 32 A ■ 1 up to max. 16 contacts
- IP66
- Insulated polycarbonate enclosure



- Control Switch
- Instrument Switch
- ON-OFF Switch
- Changeover Switch
- Multi-step Switch
- Motor Switch

Setup of order code number: Type - Switching programme - Mounting form Ordering example: 4 pole Changeover Switch 90°, 25 A, padlockable with V-handle silver/black →	Type	Switching programme	Mtg. form
	P220	61154	276V1
	Order code no. P220-61154-276V1		

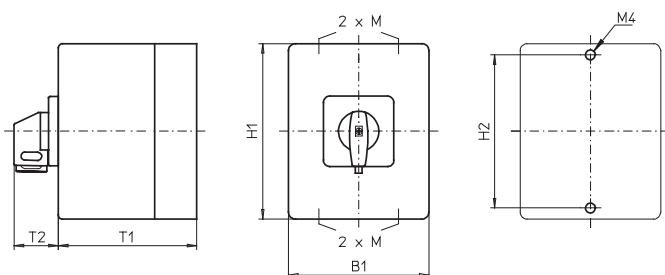
Type	Contacts	Rated data (IEC 60947)			Degree of Protection Terminals	Terminal accessibility
		Operational current I _e AC-21A (A)	Operational power (at 380–440 V)			
			AC-23A (kW)	AC-3A (kW)		
P220	1 to 12	20	7.5	5.5	IP66	Terminals accessible from mounting direction
P225	1 to 10	25	11	7.5	IP66	
M220	1 to 16	20	7.5	5.5	IP66	Terminals accessible laterally
M225	1 to 12	25	11	7.5	IP66	
T225	1 to 10	32	15	11	IP66	Terminals accessible laterally

Switching programme	Stages	Contacts	Description
61027 for types P220/P225	3	6	Changeover Switch with centre OFF 60°, 3 pole
61154 for types P220/P225	4	8	Changeover Switch with centre OFF 90°, 4 pole
61363 for types P220/P225	3	6	Changeover Switch with centre OFF 60°, 3 pole with spring return
61211 for types P220/P225	3	5	Motor Reversing Switch, 3 pole
61029 for types M220/M225/T225	5	10	Changeover Switch with centre OFF 60°, 5 pole
61032 for types M220/M225	8	16	Changeover Switch with centre OFF 60°, 8 pole
61008 for types M220/M225/T225	4	8	ON-OFF Switch 60°, 8 pole
61217 for types M220/M225	6	12	Reversing Multi-Speed Switch, single winding, 2 speeds

Switching diagrams and further switching programmes from page 56.

Mounting form	Operator	Padlockable options
276V1	padlockable with V-handle silver/black	padlockable 12h

Dimensions in mm:



Type	H1	B1	T1	T2	2 × M	H2
P220	125	100	133	32	20/25	115
P225	125	100	133	32	20/25	115
M220	125	100	133	32	20/25	115
M225	125	100	133	32	20/25	115
T225	125	100	133	32	20/25	115

Rotary Cam Switches

Enclosed Switches with insulated enclosure 125 × 100 × 133 mm

Enclosed Switches with insulated enclosure 125 × 100 × 133 mm

- with cover interlock, interlocked in ON positions
- 20 A / 25 A / 32 A ■ 1 up to max. 12 contacts
- IP66
- Insulated polycarbonate enclosure



- Control Switch
- ON-OFF Switch
- Multi-step Switch
- Instrument Switch
- Changeover Switch
- Motor Switch

Setup of order code number: Type - Switching programme - Mounting form Ordering example: 3 pole Motor Reversing Switch, 32 A, padlockable with V-handle silver/black →	Type	Switching programme	Mtg. form
	T225	61154	273V1
	Order code no. T225-61154-273V1		

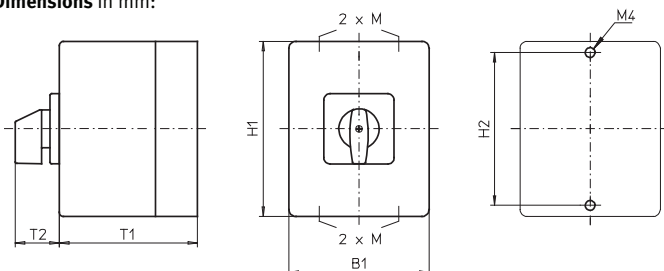
Type	Contacts	Rated data (IEC 60947)			Degree of Protection Terminals	Terminal accessibility
		Operational current I _e AC-21A (A)	Operational power (at 380–440 V) AC-23A (kW) AC-3A (kW)			
P220 P225	1 to 10 1 to 8	20 25	7.5 11	5.5 7.5	IP66 IP66	Terminals accessible from mounting direction
M220 M225	1 to 12 1 to 10	20 25	7.5 11	5.5 7.5	IP66 IP66	Terminals accessible laterally
T225	1 to 8	32	15	11	IP66	Terminals accessible laterally

Switching programme	Stages	Contacts	Description
61008 for types P220/P225	4	8	ON-OFF Switch 60°, 8 pole
61027 for types P220/P225	3	6	Changeover Switch with centre OFF 60°, 3 pole
61028 for types P220/P225	4	8	Changeover Switch with centre OFF 60°, 4 pole
61363 for types P220/P225	3	6	Changeover Switch with centre OFF 60°, 3 pole with spring return
61211 for types P220/P225	3	5	Motor Reversing Switch, 3 pole
61010 for types M220/M225	5	10	ON-OFF Switch 60°, 10 pole
61028 for types M220/M225/T225	4	8	Changeover Switch with centre OFF 60°, 4 pole
61029 for types M220/M225/T225	5	10	Changeover Switch with centre OFF 60°, 5 pole
61154 for types M220/M225/T225	4	8	Changeover Switch with centre OFF 90°, 4 pole
61211 for types M220/M225/T225	3	5	Motor Reversing Switch, 3 pole

Switching diagrams and further switching programmes from page 56.

Mounting form	Operator	Padlockable options
273V1	padlockable with V-handle silver/black	padlockable 12h
273M1	M-handle silver/black	

Dimensions in mm:



Type	H1	B1	T1	T2	2 × M	H2
P220	125	100	133	32	20/25	115
P225	125	100	133	32	20/25	115
M220	125	100	133	32	20/25	115
M225	125	100	133	32	20/25	115
T225	125	100	133	32	20/25	115

Rotary Cam Switches



Enclosed Switches with insulated enclosure 125 × 100 × 133 mm

Enclosed Switches with insulated enclosure 125 × 100 × 133 mm

- with cover interlock, interlocked in ON position
- 20 A / 25 A / 32 A ■ 1 up to max. 12 contacts
- IP66
- Insulated polycarbonate enclosure



- Main/Emergency-Off Switch
- Main Switch

Setup of order code number: Type - Switching programme - Mounting form Ordering example: 6 pole ON-OFF Switch 90°, 20 A, padlock device with N-handle yellow/red →	Type	Switching programme	Mtg. form
	M220	61907	275N4
	Order code no. M220-61907-275N4		

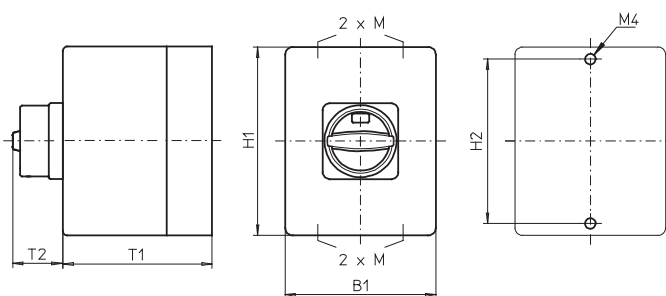
Type	Contacts	Rated data (IEC 60947)			Degree of Protection Terminals	Terminal accessibility
		Operational current I _e AC-21A (A)	Operational power (at 380–440 V)			
			AC-23A (kW)	AC-3A (kW)		
P220	1 to 10	20	7.5	5.5	IP66	Terminals accessible from mounting direction
P225	1 to 8	25	11	7.5	IP66	
M220	1 to 12	20	7.5	5.5	IP66	Terminals accessible laterally
M225	1 to 10	25	11	7.5	IP66	
T225	1 to 8	32	15	11	IP66	Terminals accessible laterally

Switching programme	Stages	Contacts	Description
61919 for types P220/P225	4	8	ON-OFF Switch 90°, 8 pole, 2 pole early make/late break
61918 for types P220/P225	4	8	ON-OFF Switch 90°, 8 pole
61910 for type P220	5	10	ON-OFF Switch 90°, 10 pole
61907 for types M220/M225/T225	4	8	ON-OFF Switch 90°, 6 pole, 2 auxiliary contacts
61910 for types M220/M225	5	10	ON-OFF Switch 90°, 10 pole

Switching diagrams and further switching programmes from page 56.

Mounting form	Operator	Main/Emergency-Off Switch	Mounting form	Operator	Main Switch
275N4		padlock device with N-handle yellow/red	275N1		padlock device with N-handle black
275M4		padlock device with M-handle yellow/red	275M1		padlock device with M-handle black
275V4		padlockable with V-handle yellow/red	275V1		padlockable with V-handle silver/black

Dimensions in mm:



Mounting form	H1	B1	T1	T2	2 × M	H2
275N4/275N1	125	100	133	33	20/25	115
275M4/275M1	125	100	133	38	20/25	115
275V4/275V1	125	100	133	32	20/25	115